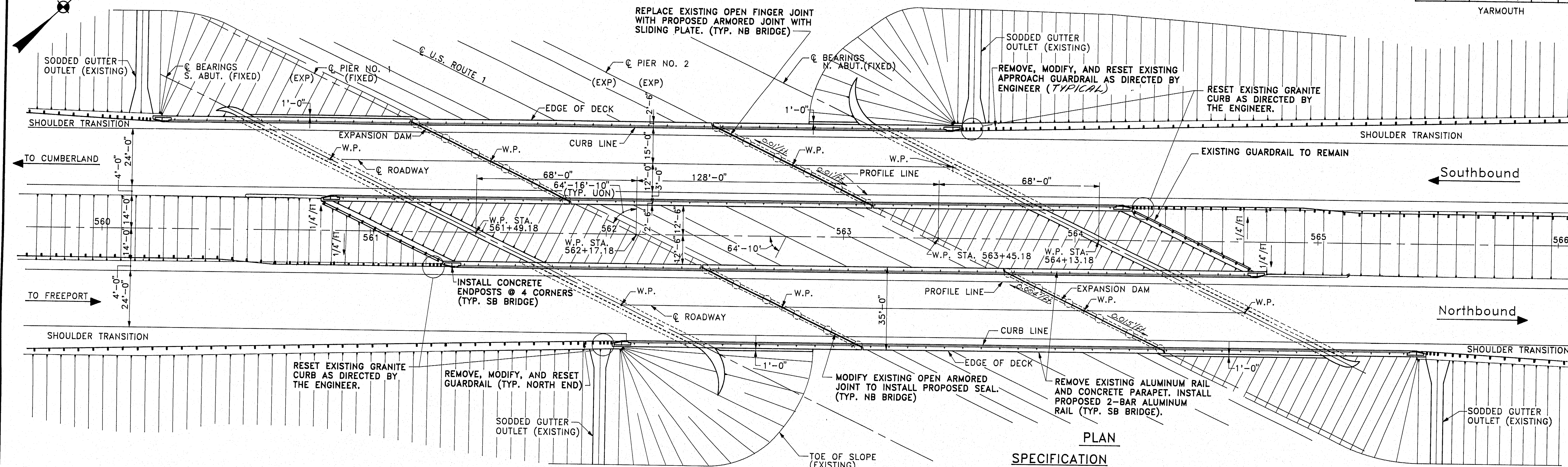


FED. AID	STATE	PROJECT NUMBER	SHEET NO.	TOTAL SHEETS
1	MAINE	IR-95-4(59)	11	25

YARMOUTH



PLAN

SPECIFICATION

DESIGN: AASHTO STANDARD SPECIFICATIONS FOR HIGHWAY BRIDGES 1989.

CONTRACT: STATE OF MAINE, DEPARTMENT OF TRANSPORTATION, STANDARD SPECIFICATIONS, HIGHWAYS AND BRIDGES, REVISION OF JULY 1988.

DESIGN LOADING

LIVE LOAD: H20-S16-44 (MODIFIED)

MATERIALS

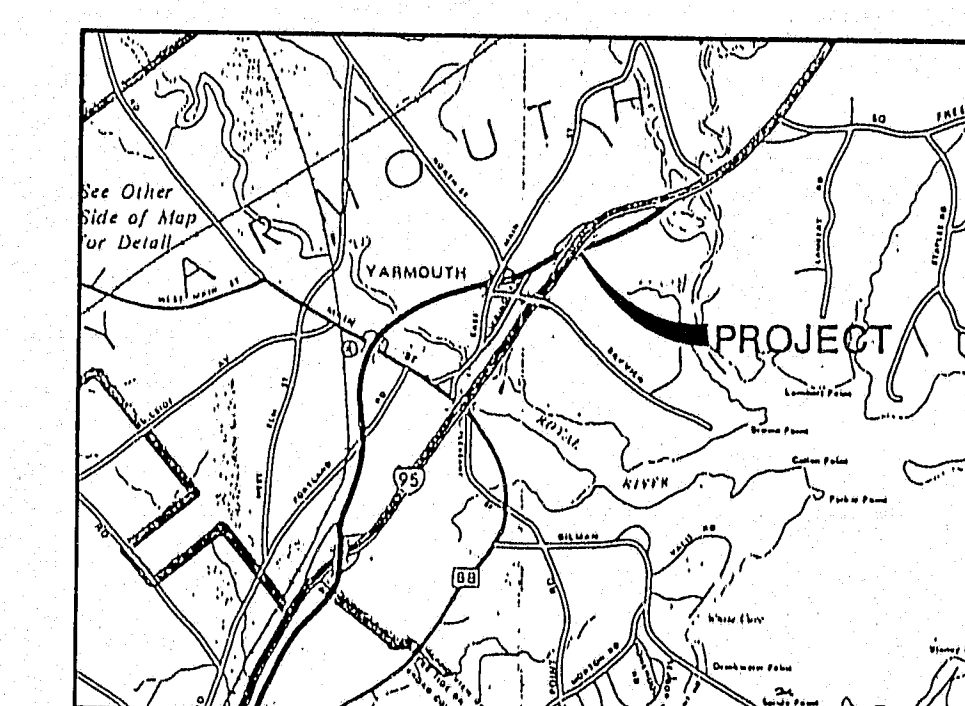
CONCRETE: CLASS A
REINFORCING STEEL: ASTM A615 GRADE 60
STRUCTURAL STEEL: ASTM A36 (Existing)
A373

BASIC ALLOWABLE STRESSES

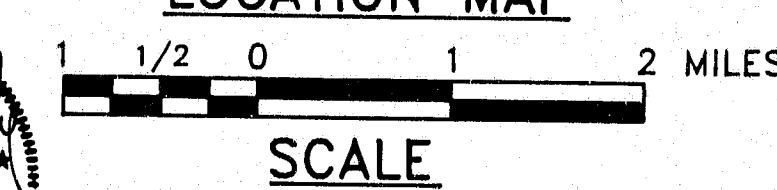
CONCRETE: $f_c = 1,200$ psi
REINFORCING STEEL: $f_s = 24,000$ psi
STRUCTURAL STEEL: $f_s = 18,000$ psi

TRAFFIC DATA

	NB	SB
AADT (1990)	15,280	16,460
AADT (2010)	27,500	29,630
DESIGN HOURLY VOLUME	3,575	3,852
PERCENT TRUCKS	9%	9%
DIRECTIONAL DISTRIBUTION (%)	100%	100%
POSTED SPEED (MPH)	65	65
18 KIP EQUIVALENT P2.5	1,518	1,615



LOCATION MAP



PIN NO. 002832.00
BRIDGE NOS 5833 & 1509

STATE OF MAINE
DEPARTMENT OF TRANSPORTATION

Kimball Chase
ONE GATE STREET
PORTSMOUTH, N.H. 03801
(603) 431-2520

I-95
over

U.S. ROUTE 1
YARMOUTH, MAINE
CUMBERLAND COUNTY
GENERAL PLAN AND SECTIONS

SHEET 1 OF 4

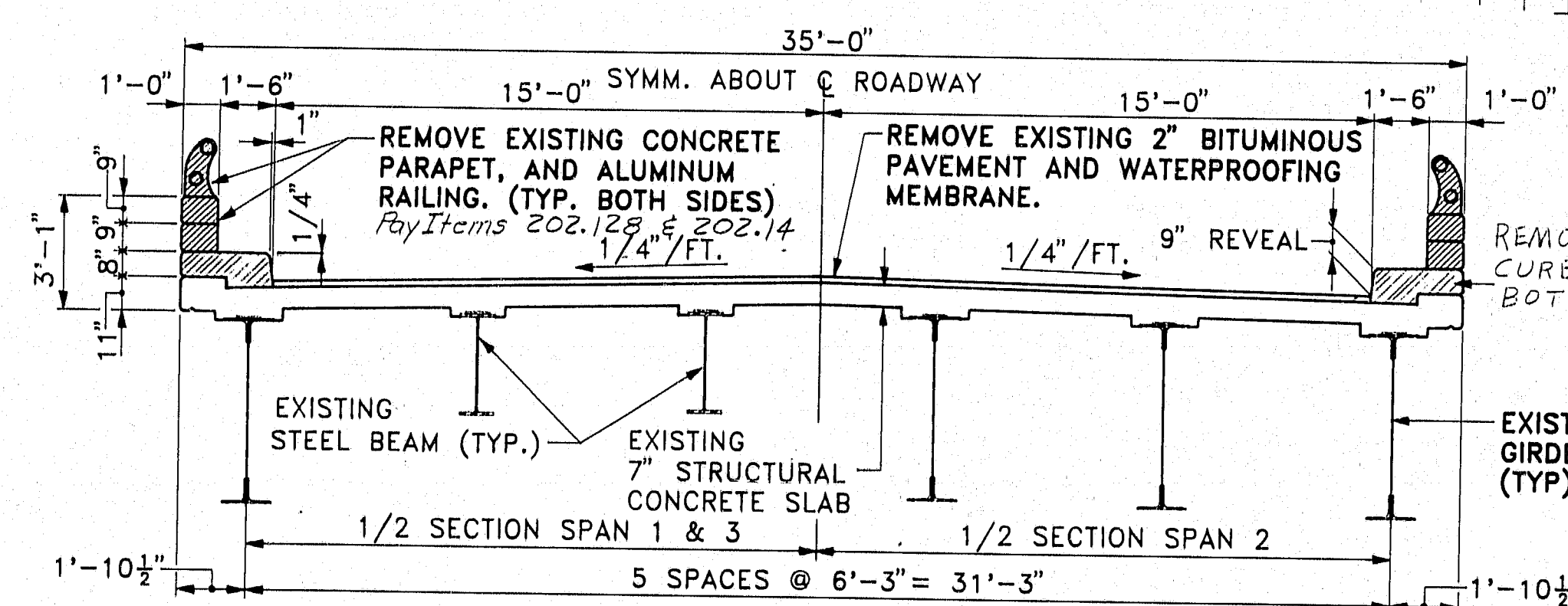
AUGUSTA, MAINE

SCOPE OF WORK

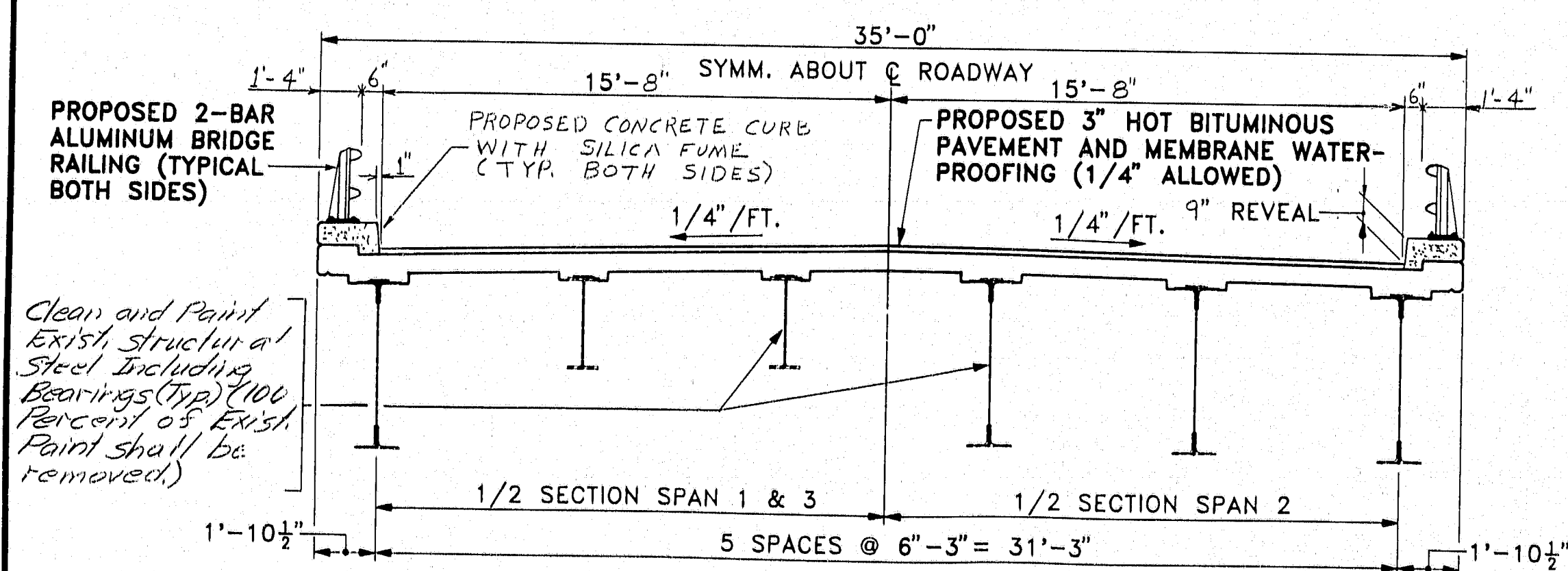
- REMOVE EXISTING BITUMINOUS CONCRETE WEARING SURFACE AND MEMBRANE WATERPROOFING. INSTALL PROPOSED 3" HOT BITUMINOUS PAVEMENT AND MEMBRANE WATERPROOFING (1/4" ALLOWED).
- CLEAN AND PAINT EXISTING STRUCTURAL STEEL INCLUDING BEARINGS.
- REMOVE EXISTING CONCRETE PARAPET AND ALUMINUM BRIDGE RAIL. INSTALL STANDARD 2-BAR ALUMINUM BRIDGE RAIL ON EXISTING CURBS.
- REPLACE EXISTING OPEN FINGER EXPANSION JOINTS WITH PROPOSED ARMORED JOINTS WITH SLIDING PLATE. (PIER 2)
- MODIFY EXISTING ARMORED JOINTS TO INSTALL PROPOSED SEALS. (PIER 1)
- REHABILITATE CRACKED, SPALLED OR OTHERWISE DETERIORATED CONCRETE PIERS, ABUTMENTS, AND TOP OF CONCRETE BRIDGE DECK, AS DIRECTED BY THE ENGINEER.
- INSTALL STANDARD CONCRETE ENDPOSTS AT APPROACH AND DEPARTURE ENDS OF BRIDGES.
- REMOVE, MODIFY, AND RESET APPROACH GUARDRAIL AS DIRECTED BY THE ENGINEER AND PROVIDE CONNECTION TO PROPOSED CONCRETE ENDPOST.
- INSTALL PROPOSED GUARDRAIL ALONG MEDIAN APPROACHES WITH BREAKAWAY CABLE TERMINALS.
- MAINTAIN ONE 12 FOOT MINIMUM TRAFFIC LANE ON EACH BRIDGE.
- REMOVE EXISTING CURBS AND INSTALL NEW CURBS.
- RESET EXISTING GRANITE CURB AS DIRECTED BY THE ENGINEER.

INDEX OF SHEETS

- GENERAL PLAN AND SECTIONS
- DETAILS AND ESTIMATE OF QUANTITIES
- MISCELLANEOUS DETAILS
- REINFORCING STEEL SCHEDULE



EXISTING CROSS SECTION OF DECK



PROPOSED CROSS SECTION OF DECK

PROJECT DESIGN ENGINEER	DATE
P. ROSE	8-20-90
CHECKER	DATE
S. MURPHY	8-20-90
REVISIONS	DATE
1. CLEAN AND PAINT EXISTING STRUCTURAL STEEL INCLUDING BEARINGS (20% OF FIRST POINT SHALL BE REMOVED)	8-20-90

Clean and Paint Existing Structural Steel Including Bearings (20% of First Point shall be removed)

109-273

Revised As Built 5-10-12

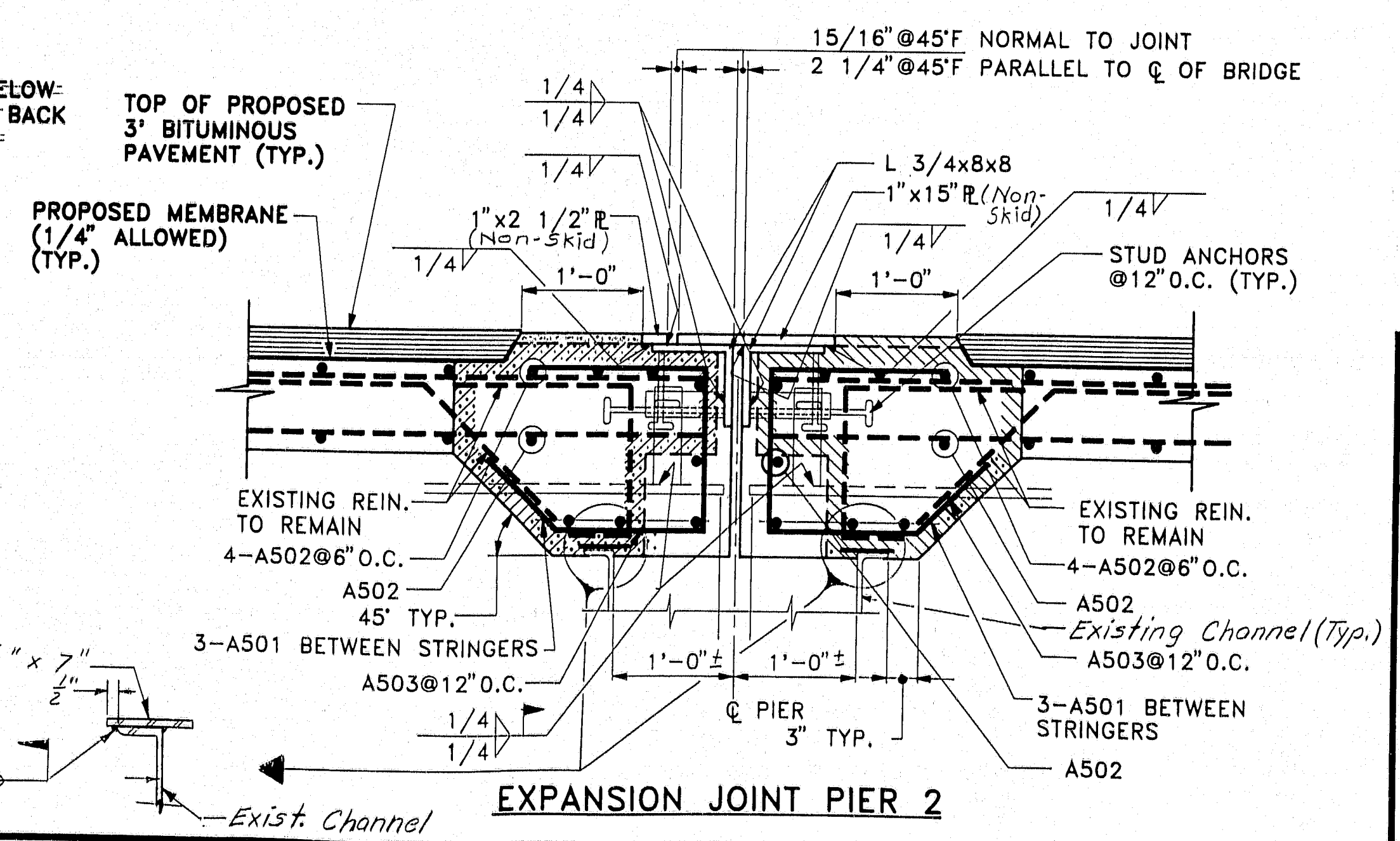
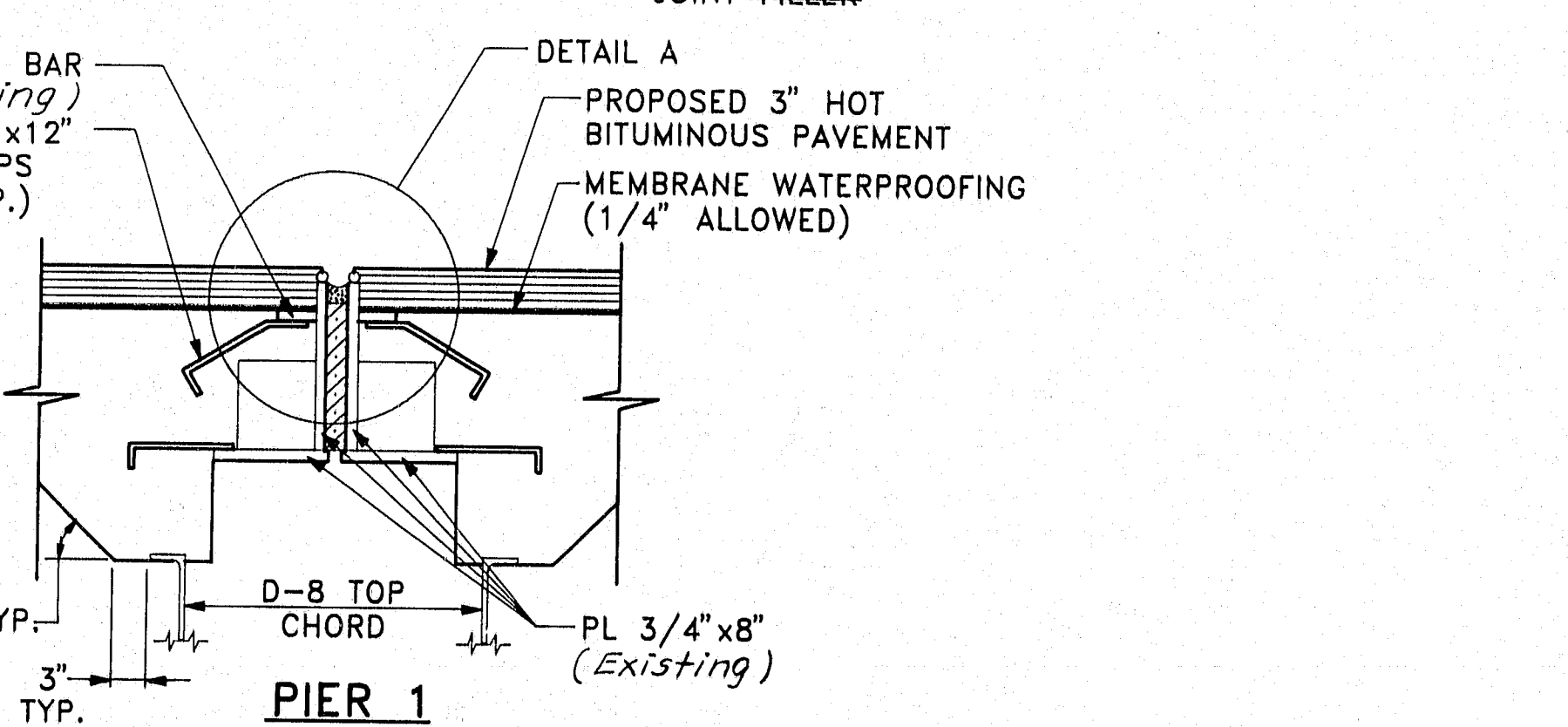
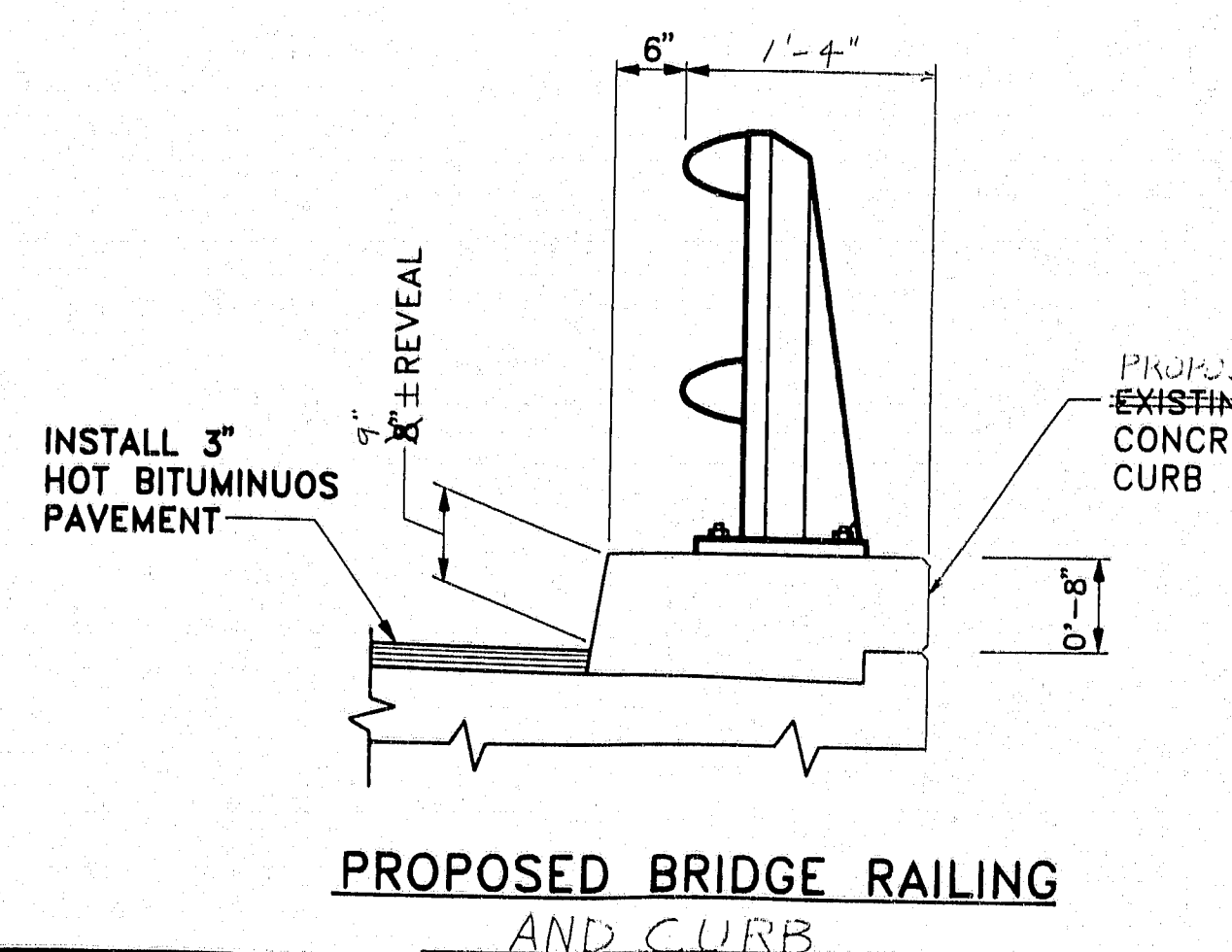
PLANS OF THE EXISTING BRIDGE ARE AVAILABLE FOR THE CONTRACTOR'S REFERENCE AT THE BRIDGE DESIGN OFFICE IN AUGUSTA. THE PLANS ARE REPRODUCTIONS OF ORIGINAL DRAWINGS AS PREPARED FOR THE CONSTRUCTION OF THE BRIDGE AND IT IS VERY UNLIKELY THAT THE PLANS WILL SHOW ANY CONSTRUCTION FIELD CHANGES OR ANY ALTERATIONS WHICH MAY HAVE BEEN MADE TO THE BRIDGE DURING ITS LIFE SPAN.

403.10	HOT BITUMINOUS PAVEMENT, GRADING 0	386	TON
503.12	REINFORCING STEEL, FABRICATION AND DELIVERED	5,700	lbs
503.13	REINFORCING STEEL, PLACING	5,700	lbs
506.17	<i>Surf. Prep.</i> EXISTING STRUCTURAL STEEL	0.51	L.S.
506.102	<i>Field Painting Existing Structural Steel</i>	0.51	L.S.
507022	<i>Aluminum Bridge Railing, 2-Bar</i>	1336	L.F.
508.13	<i>Membrane Waterproofing</i>	0.36	L.S.
514.06	<i>Curing Box for Concrete Cylinders</i>	0.13	EA.
515.21	PROTECTIVE COATING FOR CONCRETE SURFACES	0.30	L.S.
518.21	REHABILITATION OF STRUCTURAL CONCRETE SUBSTRUCTURE	800	S.F.
518.30	REHAB. OF STRUC. CONC. SLAB - TO REINFORCING STEEL	826	S.F.
518.31	REHAB. OF STRUC. CONC. SLAB - TO BELOW REINF. STEEL	330	S.F.
520.2403	BRIDGE JOINT MODIFICATION 195/ROUTE 1	4	EA.
526.301	TEMPORARY CONCRETE BARRIER TYPE I	0.3	L.S.
527.32	<i>Portable Crash Barrels</i>	10	EA.
606.364	<i>Guardrail -Remove, Modify, and Reset, Type 36</i>	100	L.F.
606.367	<i>Replace Unusable Existing Guard Rail Post</i>	4	EA.

639.18	FIELD OFFICE TYPE A	0.31	EA
639.22	TESTING FACILITIES BITUMINOUS MIXES	0.31	LS
639.23	TESTING FACILITIES CONCRETE	0.31	LS
652.30	Flashing Arrow Board	0.5	EA
652.31	Type I Barricade	30	EA
652.33	Drum	10	EA
652.34	Cone	10	EA
652.35	Construction Signs	300	SF
652.361	Maint of Traffic Control Device	0.25	LS
652.38	Flagger	100	M/H

ESTIMATE OF LUMP SUM QUANTITIES			
ITEM NO.	DESCRIPTION	QUANTITY	UNIT
506.172	FIELD PAINTING EXISTING STRUCTURAL STEEL	1,019,000	lbs.

100



1. JOINT ARMOR SHALL BE FABRICATED AND DELIVERED TO THE SITE IN TWO (2) SECTIONS (SEE ELEVATION, THIS SHEET). INSTALLATION OF JOINT ARMOR SHALL BE PERFORMED TO ALLOW ONE LANE OF TRAFFIC OVER THE BRIDGE DURING CONSTRUCTION. THE TWO SECTIONS OF JOINT ARMOR ARE TO BE WELDED IN THE FIELD TO PRODUCE ONE CONTINUOUS SECTION. WELDS ARE TO BE GROUND SMOOTH AND PAINTED.
2. See BD 304 - 89 for Curb Sliding Plate Details and for Buft Welds.

YARMOUTH

YARMOUTH

SYMBOLS

 EXISTING CONCRETE TO BE REMOVE

PROPOSED CONCRETE

PROPOSED CONCRETE

PIN NO. 002832.00

BRIDGE NO.S 5833 & 1509

STATE OF MAINE

STATE OF MAINE
DEPARTMENT OF TRANSPORTATION

Kimball ONE GATE STREET

**Kinnbull
Chorse**
 PORTSMOUTH, N.H. 03801
 (603) 431-2522

(603) 431-2520

I-95 95

over 75

U.S. ROUTE 1

U.S. ROUTE 1

YARMOUTH, MAINE

CLIMBERLAND COUNTY

COMBERLAND COUNTY
DETAILS AND

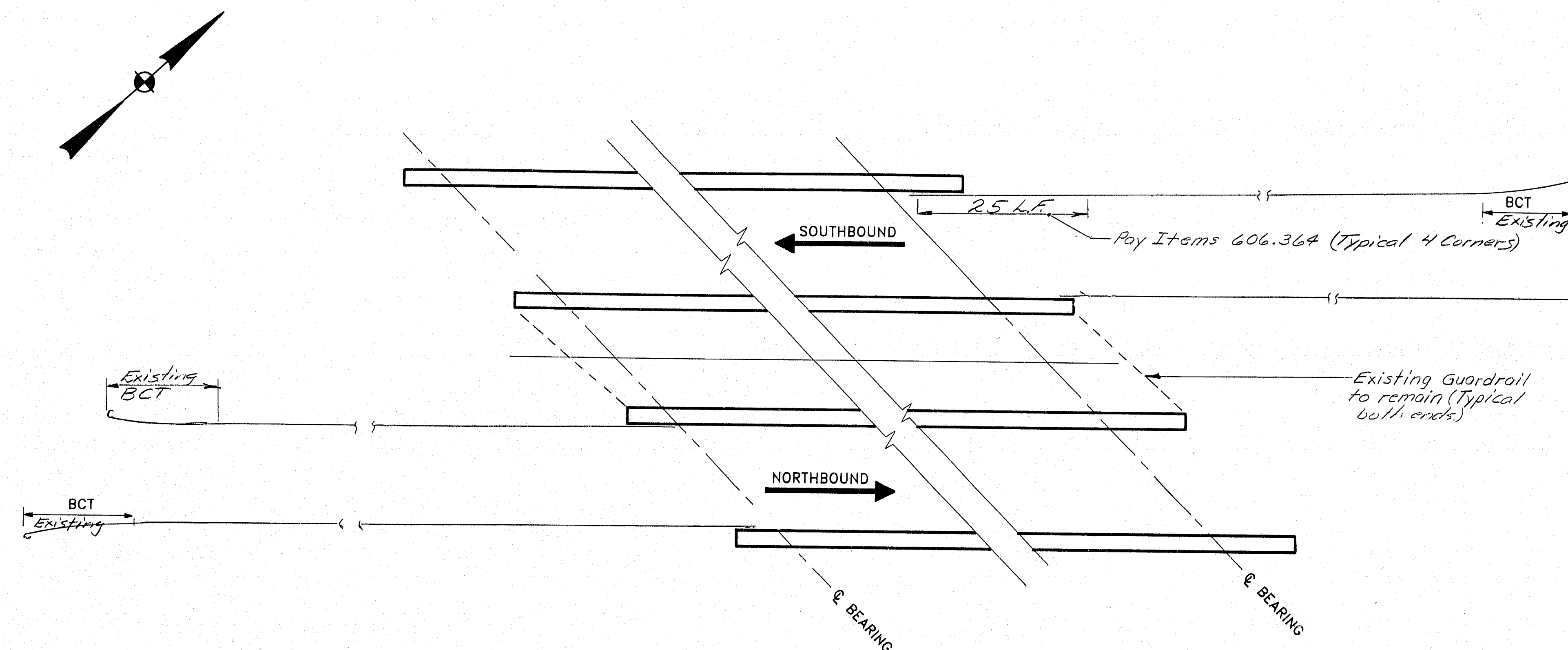
DETAILS AND ESTIMATE OF QUANTITIES

ESTIMATE OF QUANTITIES
SHEET 2 OF 4

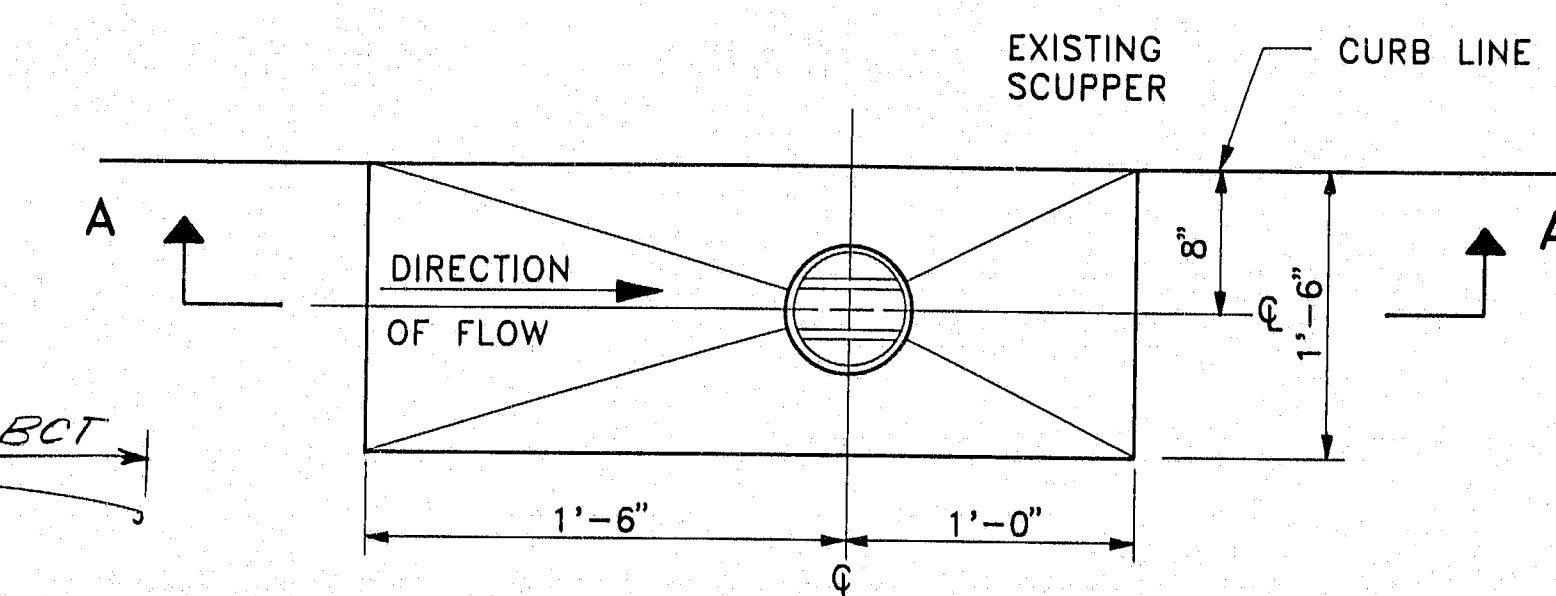
SHEET 2 OF 4 AUGUSTA, MAINE

F.H.W.A. REG. NO.	STATE	PROJECT NUMBER	SHEET NO.	TOTAL SHEETS
1	MAINE	IR-95-4(59)	13	25

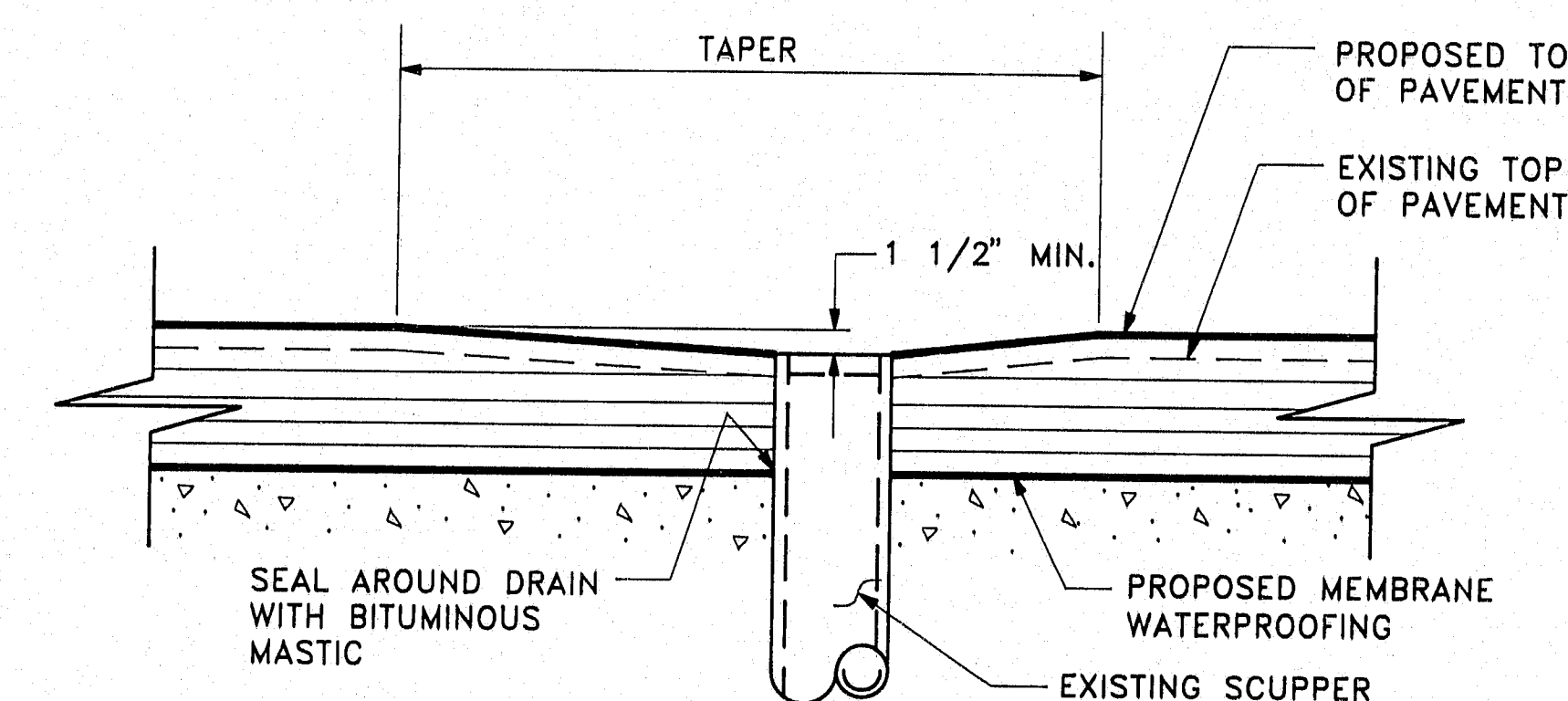
YARMOUTH



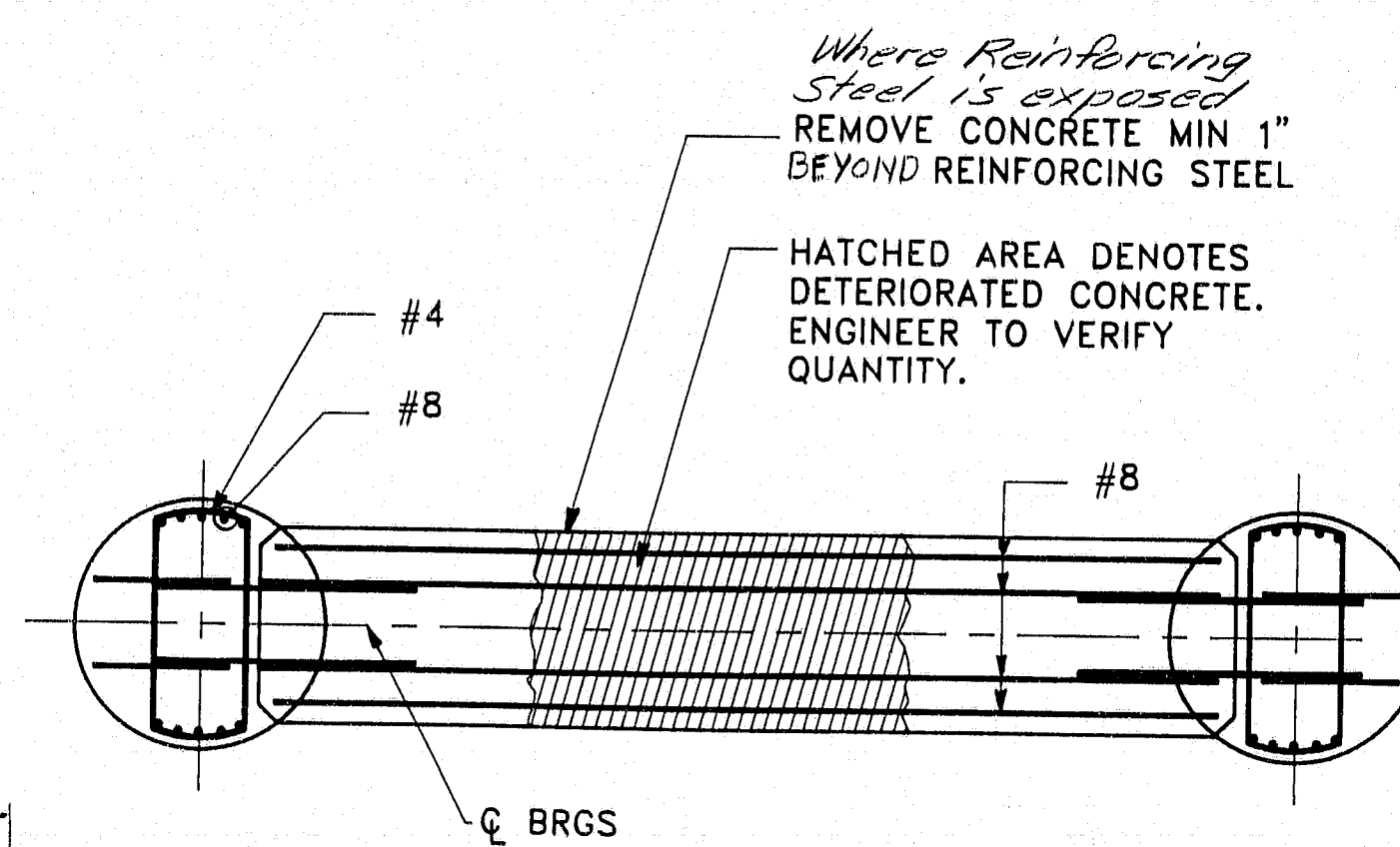
PROPOSED APPROACH GUARDRAIL LAYOUT DETAIL



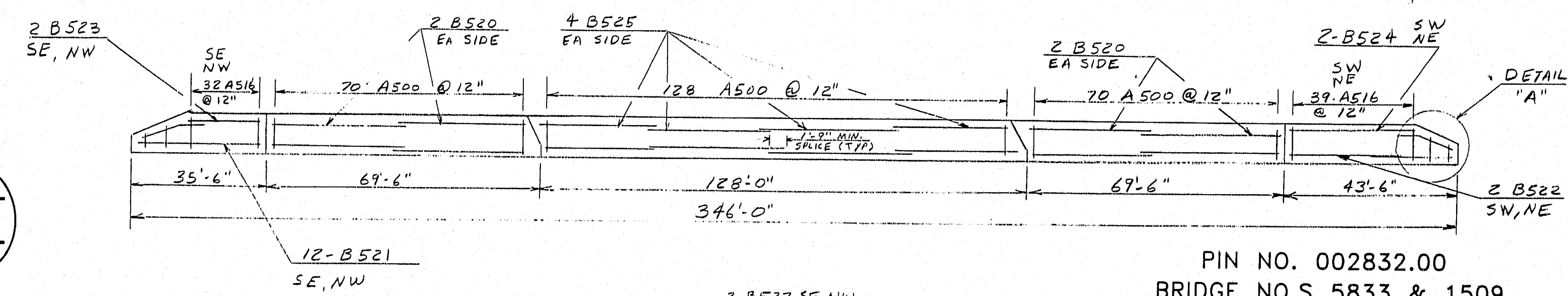
PAVEMENT BEVEL PLAN @ SCUPPER



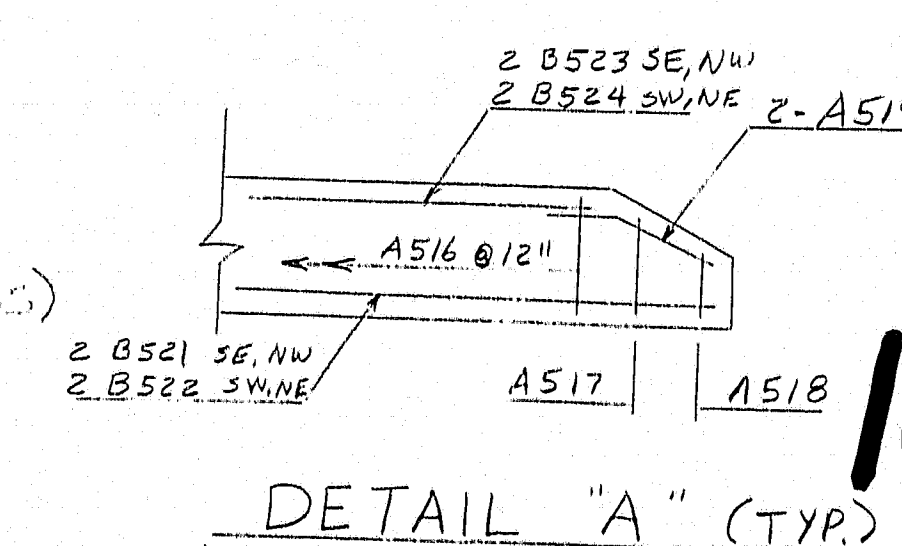
SECTION A-A



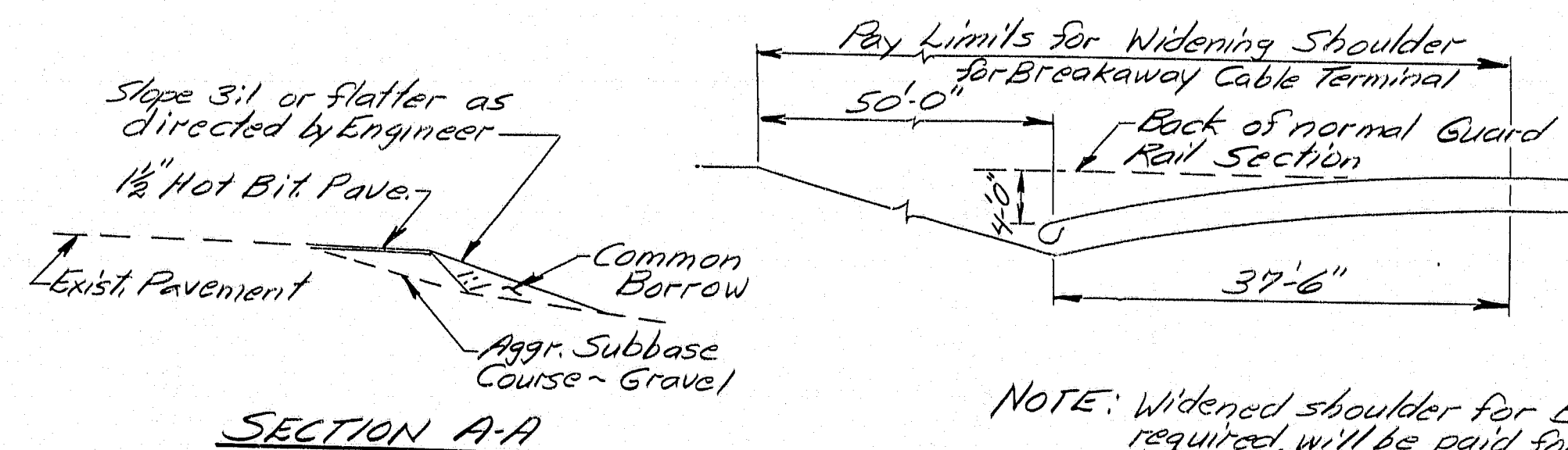
REHABILITATION OF PIER CAP (TYP)



* EXTRA WORK *
CURB REPLACEMENT
(TYPICAL, ALL FOUR CURBS)



DETAIL "A" (TYP)



SECTION A-A

NOTE: Widened shoulder for Breakaway Cable Terminal, when required, will be paid for under Item 606.751 complete in place, which price, shall be full payment for furnishing and placing, grading and compaction of Aggregate Subbase, Common Borrow, seed and mulch. The Hot Bituminous Pavement will be paid for under Item 403.10.

DETAIL OF SHOULDER WIDENING FOR BREAKAWAY CABLE TERMINAL

PIN NO. 002832.00
BRIDGE NO.S 5833 & 1509

STATE OF MAINE
DEPARTMENT OF TRANSPORTATION

Kimball Chase
ONE CATE STREET
PORTSMOUTH, N.H. 03801
(603) 431-2520

I-95
over

U.S. ROUTE 1

YARMOUTH, MAINE

CUMBERLAND COUNTY

MISCELLANEOUS DETAILS

SHEET 3 of 4

AUGUSTA, MAINE

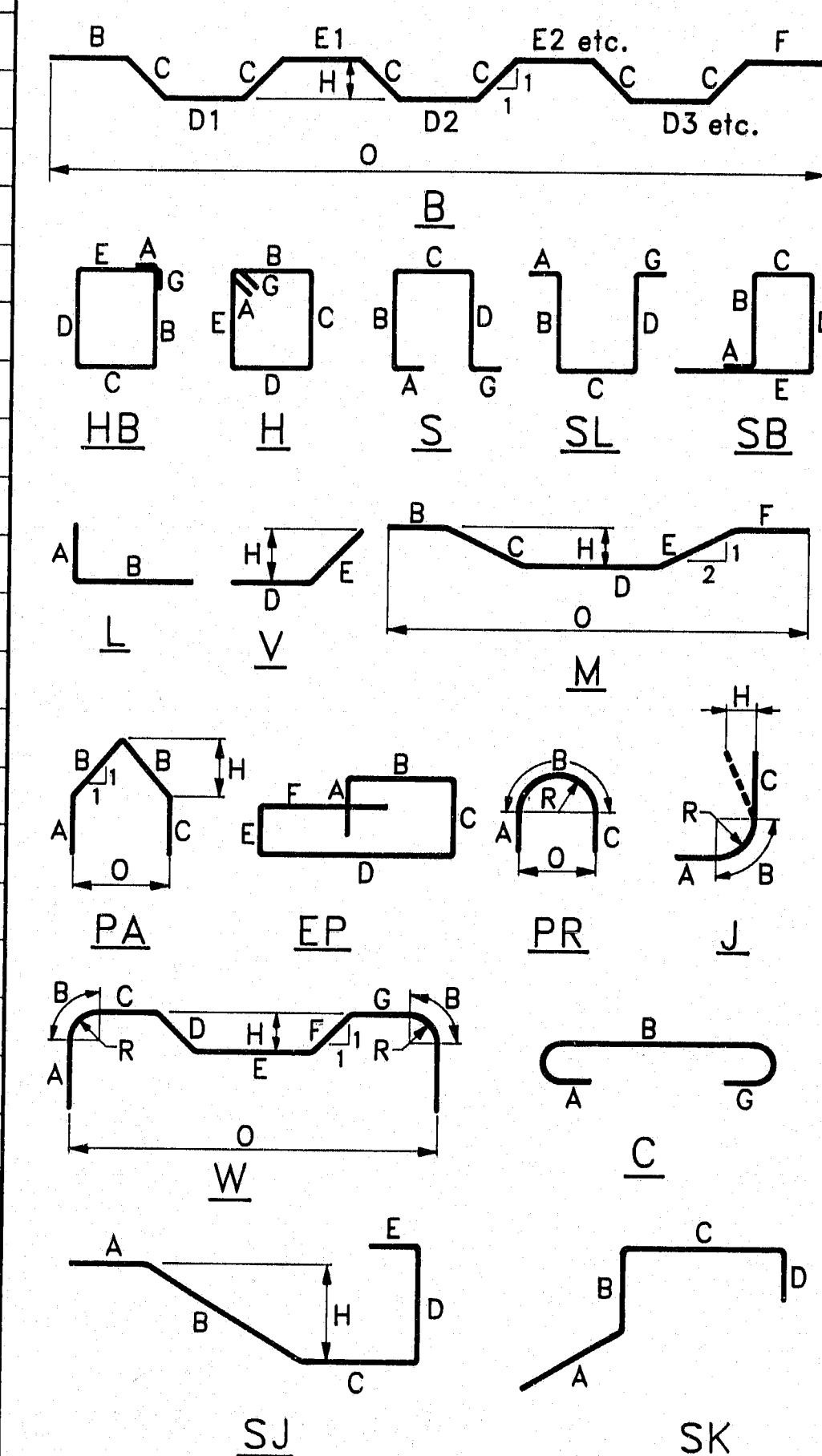
109-275

Revised As Built
JES 5-10-93

FED. PROJ. NO.	STATE	PROJECT NUMBER	SHEET NO.	TOTAL SHEETS
1	MAINE	IR-95-4(59)	14	25

YARMOUTH

TYPE-BENDING DIAGRAMS



ALL DIMENSIONS ARE OUT TO OUT OF REINF. BAR BENDING DETAILS AND HOOKS SHALL CONFORM TO THE RECOMMENDATIONS OF THE CURRENT REVISION OF ACI STANDARD 318.

REINFORCING BAR: ASTM A615 GRADE 60

GENERAL NOTES

- FIRST DIGIT(S) FOLLOWING THE LETTER OF THE MARK INDICATES SIZE OF REINF. BAR.
MARK (A502) BAR SIZE-#5
MARK (P1001) BAR SIZE-#10
MARK (S603) BAR SIZE-#6
- EACH TRUSS BAR, TYPE B, MAY BE REPLACED BY TWO (2) STRAIGHT BARS (ONE TOP & ONE BOTTOM) OF THE SAME BAR SIZE AS THE TRUSS BAR. PAYMENT IN EITHER CASE SHALL BE BASED ON TRUSS BARS AS SCHEDULED ON PLANS.

PIN NO. 002832.00
BRIDGE NO.S 5833 & 1509

STATE OF MAINE
DEPARTMENT OF TRANSPORTATION

Kimball Chase ONE GATE STREET
PORTSMOUTH, N.H. 03801
(603) 431-2520

I-95
over

U.S. ROUTE 1
YARMOUTH, MAINE
CUMBERLAND COUNTY
GENERAL PLAN AND SECTIONS

SHEET 4 OF 4

AUGUSTA, MAINE

REINFORCING STEEL SCHEDULE

STRAIGHT BARS				BENT BARS																							
MARK	NO.	LENGTH	LOCATION	MARK	NO.	LENGTH	LOCATION	MARK	NO.	LENGTH	LOCATION	MARK	NO.	LENGTH	TYPE	A	B	C	D	E	F	G	H	O	R	LOCATION	
SUPERSTRUCTURE												SUPERSTRUCTURE															
A501	60	13'-10"	EXP. JOINT PIER 2									A503	324	6'-6"	SJ	0	1'-1"	1'-10"	1'-2"	2'-3"				0'-9"			EXP. JOINT PIER
A502	48	40'-10"	EXP. JOINT PIER 2																								

PROJECT DESIGN NUMBER	DATE
P. BOSS	8-29-80
J. BAILEY	7-5-80
S. MACALLY	
REVISIONS	
FIELD CHANGES	

PLANS

109-276